

This
is
Not
Your
Grandfather's
Office
Chair



X-CHAIR



As Seen In & Heard On

The New York Times



THE WALL STREET JOURNAL.

Print

The Chicago Tribune
The Los Angeles Times
Los Angeles Area Newspaper Group
The Arizona Republic
The Atlanta Journal Constitution
Orlando Sentinel
Boston Globe
Philadelphia Inquirer
Houston Chronicle
Baltimore Sun
Dallas Morning News
Salt Lake City Tribune
Kansas City Star
Miami Herald
Charlotte Observer
Nashville Tennessean
Detroit Free Press
Colorado Springs Gazette
Chicago Tribune
Bloomberg Businessweek
Southwest: The Magazine

Radio

Bloomberg
(Sirius/XM Radio)
Fox Business News
(Sirius/XM Radio)
CNBC
(Sirius/XM Radio)
Patriot
(Sirius/XM Radio)
ESPN
(Sirius/XM Radio)
Fox News
(Sirius/XM Radio)
CNN
(Sirius/XM Radio)
The Dennis Prager Show
The Stephanie Miller Show
Kilmeade & Friends
(Sirius/XM Radio)



This is Not Your Grandfather's Office Chair

3 Story

The future is born

5 Features

Our exclusive technology

7 X¹-TASK

Breaking boundaries

9 X²-MGMT

Welcome to the 21st century

11 X³-MGMT

Everyone respects a good upgrade

13 X⁴-EXEC

Making an office statement

15 X⁶-WING

Coming fall 2017

17 X-BASIC

Dealer exclusive model

19 X-STACK

Finally a comfortable stack chair

20 X-SIDE

The perfect counterpart

21 Textiles/Bases

All color options in one place

23 Sales Channels

Understanding X-Chair in the marketplace

24 Warranty & Cert.

The fine details

26 SPEQC

Understanding the benefits



Welcome to the 21st Century

There is a new standard in office seating. With 10 ergonomic adjustments, the X-Chair® is able to fit your body like a glove. Fine-tune the arms, seat, back, headrest, and lumbar until you're relaxing in the most comfortable seat of your life. SciFloat Infinite Recline, DVL Support, Tilt Lock, and Flex Mesh technologies combine to vault the X-Chair® to the head of the pack, making it the most technologically ergonomic chair in the world. Choose from vibrant color and material options to create a truly individualized workspace.

X-Chair's design is innovative, modern and sleek.

X-Chair's remarkable Dynamic Variable Lumbar Support (DVL) provides better support and a more comfortable fit and sit than anything else on the market.

Say goodbye to the constraints and discomfort of antiquated office technology. Say hello to X-Chair.

Customer Focused

X-Chair's marketing strategy is innovative. X-Chair is going straight to the consumer and the consumer is telling us what they like. Without seeing the chair in person before they buy it, 97% of consumers who purchase the chair online are highly satisfied with their X-chair. This is the best gauge possible of how good a job X-Chair is doing at meeting the end user's needs.



Outfitting an entire office?

X-Chair's ergonomic design facilitates movement and improved circulation, which increases focus and productivity. Imagine what an entire office can accomplish in the X-Chair.

X-CHAIR

This isn't your grandfather's office chair

It's a motivator – a tool to make you more productive. It's an investment in your health – a support to keep you comfortable while you work long hours. It's a work of art – a new aesthetic for your workspace. It's a symbol that you're serious about where you're at and where you're going, but determined to have fun along the way. This is the X-Chair.

Comfort Beyond the Sit

X-Chair's SciFloat Infinite Recline allows your torso and upper body to stay in movement throughout the day, and the Under Desk Footrest does the same for your lower body. The footrest is placed on, not screwed onto, its polished aluminum frame so that the surface of the footrest can move with you throughout the day. This helps keep your legs in motion even when you sit for long periods, and makes it easy to find a comfortable position.



Dynamic Variable Lumbar (DVL) Support

The Dynamic Variable Lumbar (DVL) Support is X-Chair's greatest ergonomic feat of all – one that needs no adjusting. The DVL Support intuitively adjusts itself to your body every time you move. Responding to your weight, height, position, and the amount of pressure you place on it, the DVL Support pivots with you, keeping you comfortable and supported even as you change positions throughout the day. Be free to keep your mind on your work, not your back.



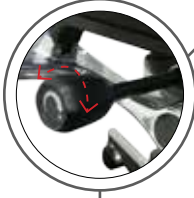
Tilt Tension & Tilt Lock

We made a masterful office chair, you get to adjust it to suit your preferences. Adjust the tilt tension to change the amount of resistance you feel as you recline. Whether you like a little or a lot of resistance, X-Chair's got you covered. Lock the chair in a reclined position for those times you need to put your feet up.



Extensive Variable Recline

Extensive Variable Recline or EVR is specific to the X1 task chair. X1 users will find that EVR provides a level of customizable comfort previously unimaginable.



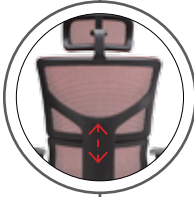
SciFloat Infinite Recline

Created specifically for X-Chair, SciFloat Infinite Recline facilitates motion throughout your day. Movement increases circulation, concentration, and energy levels—everything you need to boost both comfort and productivity in your workspace. Wheels are no longer the only thing a good office chair needs to keep you moving.



Adjustable Seat Height

We don't know how tall you are. But you know, so we'll leave the height of your seat up to you. Easily adjust the seat height so your feet rest flat on the ground and your knees are at a 90° angle.



Height-Adjustable Backrest

X-Chair's independently adjustable backrest lets you raise the dynamic variable lumbar support to fit the curve of your back. Bring the dynamic variable lumbar support to a comfortable position and relax while it supports the natural shape of your spine.



Adjustable Seat Depth

At a proper seat depth, your lower back should be against the dynamic variable lumbar support and you should be able to fit 2 to 3 fingers between the edge of your seat and the backs of your knees. An improper seat depth puts undue pressure on the veins and lymph nodes behind your knee, and often leads to poor circulation, leg cramps, or your legs falling asleep. This is all avoidable with the X-Chair's adjustable seat depth.



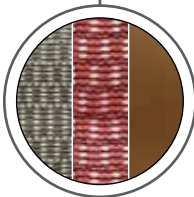
Adjustable Headrest Angle

Your head and neck do not stay in the same place all day, so neither should your headrest. Easily adjust the angle of X-Chair's headrest to find comfort no matter what position you want to sit in.



4-Dimensional Arms

4-Dimensional armrests adjust forward and back, side-to-side, up and down, and pivot to an angle. No one keeps their arms in the same position all day, and X-Chair is ready to move with you.



3 Unique Textiles

X1 comes with Flex Mesh Technology, a breathable and durable mesh that is up to the task of supporting you all day. X2 has K-Sport advanced performance material, which features a tighter weave for a softer feel. The X4 is covered in supple, ultra-comfortable premium leather that looks as luxurious as it feels. Each fabric is available in your choice of color.



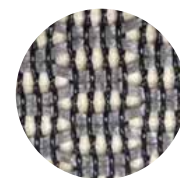
“

This chair is amazing. I spend many long days at my desk and I feel as human when I get up as when I first sit down. It provides support in all of the right places. It has exceeded my expectations!

Tom, ★★★★★

”

Fabric Options Flex Mesh Technology



Gray



Black

Extensive Variable Recline (EVR)

Extensive Variable Recline or EVR is specific to the X1 task chair. X1 users will find that EVR provides a level of customizable comfort previously unimaginable.

Packed with Features

Learn more about X-Chairs features on page 4.

- *Dynamic Variable Lumbar (DVL) Support*
- *Tilt Tension & Tilt Lock*
- *Extensive Variable Recline (EVR)*
- *Adjustable Seat Height*
- *Height-Adjustable Backrest*
- *Adjustable Seat Depth*
- *Adjustable Headrest Angle*
- *4-Dimensional Arms*
- *Flex Mesh Technology*



X-TASK X1's classic black base pairs with the black and gray mesh color options to create an aesthetic that works in any office environment. The bold curves of the X-Chair deliver modern technology and comfort that can't be found in any other office chair.



“

Great chair. I am very satisfied. I was having a lot of hip discomfort with my old chair...All aches have been relieved. My chair is the most popular in the office. When on vacation others borrow it. I am sure we will all have an X-chair soon enough.

Pat, ★★★★★

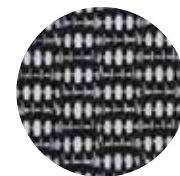
”

X²-MGMT A striking polished aluminum base and four soft-to-the-touch K-Sport advanced performance material color options, from vibrant red to classic black, let you individualize your X2 like never before. The X2's bold curves, advanced technology, and unprecedented comfort transform any workspace into an oasis.

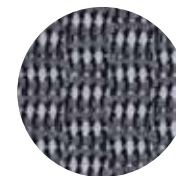


Fabric Options

K-Sport Advanced Performance Material



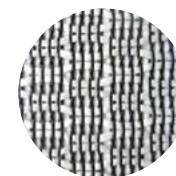
Black



Gray



Red



White

SciFloat Infinite Recline

Created specifically for X-Chair, SciFloat Infinite Recline facilitates motion throughout your day. Movement increases circulation, concentration, and energy levels—everything you need to boost both comfort and productivity in your workspace. Wheels are no longer the only thing a good office chair needs to keep you moving.



Packed with Features

Learn more about X-Chairs features on page 4.

- *Dynamic Variable Lumbar (DVL) Support*
- *Tilt Tension & Tilt Lock*
- *SciFloat Infinite Recline*
- *Adjustable Seat Height*
- *Height-Adjustable Backrest*
- *Adjustable Seat Depth*
- *Adjustable Headrest Angle*
- *4-Dimensional Arms*
- *K-Sport Performance Material*



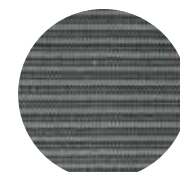
**Available
fall 2017**

X³-MGMT Introducing X3, perhaps the best X-Chair yet. X3 incorporates all of the same design and features as the X2 but replaces the X2's K-Sport material with the latest advancement in fabric technology, Advanced Tensile Recovery Fabric (ATR), and a high resiliency molded foam seat. In addition, ATR is water, spill and stain resistant, meaning your chair will continue to look good as new for years to come. When you feel the ATR difference you will wonder how you ever were satisfied with traditional fabric.



Fabric Options

Advanced Tensile Recovery Fabric



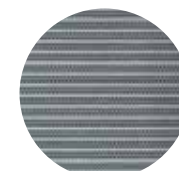
Black



Blue



Green












Gray

Advanced Tensile Recovery Fabric

Drawing its inspiration from modern material designs and ancient buttressing principles, ATR is a woven multilayered nylon that is both responsive and supportive. Comparing to traditional fabrics, it has more give and spring and as a result it provides an enhancing layer to the X3's already remarkable underlying molded seating support surface.

Packed with Features

Learn more about X-Chairs features on page 4.

-  *Dynamic Variable Lumbar (DVL) Support*
-  *Tilt Tension & Tilt Lock*
-  *SciFloat Infinite Recline*
-  *Adjustable Seat Height*
-  *Height-Adjustable Backrest*
-  *Adjustable Seat Depth*
-  *Adjustable Headrest Angle*
-  *4-Dimensional Arms*
-  *Advanced Tensile Recovery (ATR) Fabric*





“

This chair is impressive. I am a CPA and sit for long hours at the computer, and have found that this chair has improved my comfort substantially. The lumbar support feature is phenomenal! Took a bit of time to get everything figured out, but I am very happy with the chair and would highly recommend it.

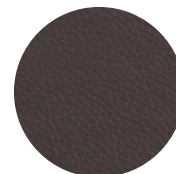
Cheryl, ★★★★★

”

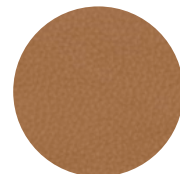
Fabric Options Premium Leather



Black



Brown



Cognac

High Resiliency Molded Foam Seat

Designed to provide a universal sit and tailored fit, the high resiliency molded foam seat offers a comfortable, supportive feel. From the moment you sit, the HRM seat pairs famously with the Dynamic Variable lumbar support to cradle you in luxury. Work long hours without fatigue.

Packed with Features

Learn more about X-Chairs features on page 4.

- Dynamic Variable Lumbar (DVL) Support
- Tilt Tension & Tilt Lock
- SciFloat Infinite Recline
- Adjustable Seat Height
- Height-Adjustable Backrest
- Adjustable Seat Depth
- Adjustable Headrest Angle
- 4-Dimensional Arms
- Premium Leather
- High Resiliency Molded Foam Seat



X⁴-EXEC X4 is draped in supple, premium leather. The seat, back, and optional head-rest deliver a delicious comfort from the moment you touch. X-Chair's Flex Mesh Technology is still at work in the seatback, which features an innovative and attractive layer of mesh behind the leather to deliver the support you need with the comfort and style you deserve.



**Available
fall 2017**

X^G-WING While incorporating the same design and features as the X2, the XG adds a split back element for greater flexibility and performance. The XG retains the lines of its classic cousin the X2, but we have learned from our customers and created an innovative flexible upper back. In the same way that the Dynamic Variable Lumbar (DVL) already adjusts to meet each individual's need for proper lumbar support, the XG Split Back adjusts to match each individual.

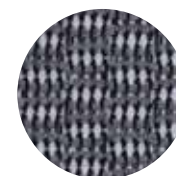


Fabric Options

K-Sport Advanced Performance Material



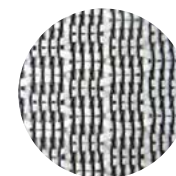
Black



Gray



Red



White

Split Back Technology

Now your entire upper body is free to flex as it pleases in the XG split wing design. Lean right, left, or back and feel the chair follow you. If you are an active sitter or perform high energy tasks, this is the model for you. The entire back will follow you wherever you want to go.



Packed with Features

Learn more about X-Chairs features on page 4.

-  *Dynamic Variable Lumbar (DVL) Support*
-  *Tilt Tension & Tilt Lock*
-  *SciFloat Infinite Recline*
-  *Adjustable Seat Height*
-  *Height-Adjustable Backrest*
-  *Adjustable Seat Depth*
-  *Dynamic Motion Headrest (DMH)*
-  *4-Dimensional Arms*
-  *K-Sport Performance Material*
-  *Split Back Technology*



**Contract Dealers
Only.
Not Available
for Retail**

X-BASIC X-Basic has maintained the benefits of the DVL and Flex mesh, but we have limited some of the other features found on the X1 through X4 lineup. The mechanism has the tension control underneath and is less precise than the mechanisms on our other chairs. There is no seat slide functionality, and the arms are only height adjustable. The foam seat offers a comfortable, supportive feel.



Fabric Options Flex Mesh Technology



Black

Dynamic Variable Lumbar Support

The Dynamic Variable Lumbar (DVL) Support intuitively adjusts itself to your body every time you move. Responding to your weight, height, position, and the amount of pressure you place on it, the DVL Support pivots with you, keeping you comfortable and supported even as you change positions throughout the day. Be free to keep your mind on your work, not your back.



Packed with Features

Learn more about X-Chairs features on page 4.

- *Dynamic Variable Lumbar (DVL) Support*
- *Height-Adjustable Backrest*
- *High Resiliency Molded Foam Seat*
- *Under-seat tension adjustment*
- *Adjustable Seat Height*
- *Tilt Lock*
- *Height Adjustable Arms*
- *Flex Mesh Technology*



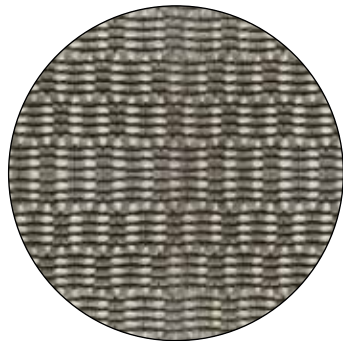
X-STACK Imagine a folding chair that's actually comfortable, a folding chair that provides ergonomic support and the freedom of motion. It was unheard of...until now. The X-Stack has raised the bar for space-saving seating solutions. Its extraordinary Pivot Backrest moves with the user, facilitating improved circulation and concentration by allowing natural movement. And when X-Stack's job is done, the ergonomically contoured seat neatly folds up for compact storage. Multiple X-Stacks fit comfortably together to form a space-saving and organized queue. Convenience, comfort and style have come together at last. The Pivot Backrest is unique to the X-Stack. As you lean back, the backrest moves with you, maintaining its ergonomic contour and granting freedom of motion for extraordinary comfort.



X-SIDE You ask and we deliver. The incredible ergonomic comfort of X-Chair's proprietary Dynamic Variable Lumbar support is now available in a side chair. No matter how many people use it each day, the X-Side's backrest adjusts automatically to provide personalized support for everyone. Flex Mesh Technology in the seat and back delivers additional ergonomic comfort and facilitates improved concentration. The X-Side features a striking polished aluminum uni-body frame that has been molded from a single piece of metal for maximum strength and a beautiful composition. Experience the responsive comfort of X-Chair in this stunning and versatile new design.

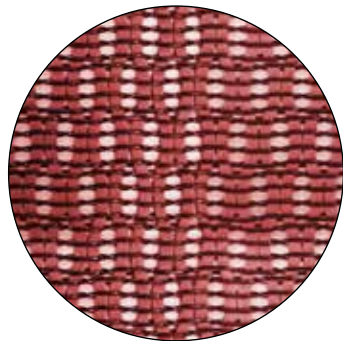
Textiles & Bases

X-Chair's fabric suspension system disperses your weight evenly across the chair to remove weight from sensitive pressure points. This improves circulation and keeps you comfortable so you can sit as long as you like without feeling that you need to change positions. The X4 is covered in supple, ultra-comfortable premium leather that looks as luxurious as it feels. Each fabric is available in your choice of color.



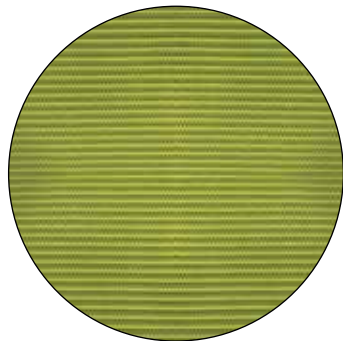
Flex Mesh Technology

X1 comes with Flex Mesh Technology, a breathable and durable mesh that is up to the task of supporting you all day.



K-Sport Advanced Performance Material

X2 has K-Sport advanced performance material, which features a tighter weave for a softer feel.



Advanced Tensile Recovery Fabric

ATR Fabric on X3 is a woven multilayered nylon that is both forgiving and supportive.



Premium Leather

The X4 is covered in supple, ultra-comfortable premium leather that looks as luxurious as it feels. Each fabric is available in your choice of color.



Satin Black Base standard on X1

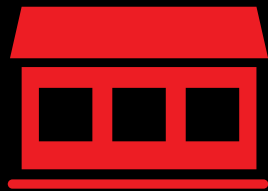


Polished Aluminum Base standard on X2, X3, X4



Polished Aluminum Stool Base optional on all models





RETAILERS

X-CHAIR IS COMMITTED TO SUPPORTING A CAREFULLY SELECTED GROUP OF NATIONWIDE RETAILERS.



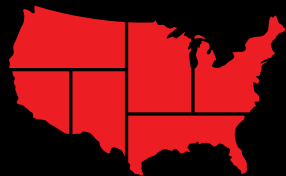
E-TAILERS

X-CHAIR IS AVAILABLE ONLINE THROUGH XCHAIR.COM AND A VERY SMALL GROUP OF AUTHORIZED RETAILERS.



OFFICE FURNITURE DEALERS

X-CHAIR IS COMMITTED TO MAKING ITS CHAIRS AND ACCESSORIES AVAILABLE TO COMPANIES, LARGE AND SMALL, THROUGH A CURATED NETWORK OF HIGH QUALITY MID-MARKET OFFICE FURNITURE DEALERS LOCATED THROUGHOUT THE USA.



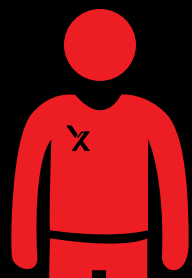
TERRITORY REPS

X-CHAIR WILL CONSIDER WORKING WITH INDIVIDUAL REPS OR REP GROUPS IN SELECTED REGIONS.



INTERNATIONAL DEALERS & MASTER LICENSEES

X-CHAIR IS OPEN TO EXPLORING INTERNATIONAL MASTER LICENSEE RELATIONSHIPS AND, IN SELECT SITUATIONS, OPENING INDIVIDUAL INTERNATIONAL DEALERS.



X-CHAIR AMBASSADORS

X-CHAIR'S UNIQUE AMBASSADOR PROGRAM ENABLES INDIVIDUAL EVANGELISTS FOR THE CHAIR TO EARN AFFILIATE COMMISSIONS BY SELLING THE CHAIR TO OTHER INDIVIDUALS.

Certifications

All X-Chairs are ANSI/BIFMA X5.1 certified. This standard is intended to provide manufacturers, specifiers, and users with a common basis for evaluating the safety, durability, and structural adequacy of general-purpose office chairs.

General-purpose office chairs are normally used in an office environment and may include, but are not limited to those seating styles typically referred to as: executive/management, task/secretarial, side/guest chairs, nesting folding chairs, tablet arm chairs and stools.

This standard describes the means of evaluating general-purpose office chairs, independent of construction materials, manufacturing processes, mechanical designs or aesthetic designs.

All X-Chairs are also ANSI/BIFMA E3 Furniture Sustainability Level 2 certified. The purpose of this voluntary standard is to provide measurable market-based definitions of progressively more sustainable furniture by establishing performance criteria that address environmental and social aspects throughout the supply chain. It addresses product-based characteristics in the general areas of materials, energy usage, human and ecosystem health, and social responsibility impacts. The standard was designed to allow for multiple levels of achievement and to provide an open alternative to proprietary protocols.



Warranty

X-Chair warrants this product for a period of 15 years, subject to the following exceptions:

All parts and materials are warranted for 5 years. During this time, X-Chair™ will provide replacement parts for any damage that is due to defect in material or workmanship. For the first 2 years, X-Chair™ will bear the entire cost of replacement parts and shipping. For the next 3 years, X-Chair™ will bear the cost of the replacement parts, but the customer will be liable for the cost of shipping.

All non-moving metal components of the chair are warranted for an additional 10 years (for a total of 15 years).

The customer must provide appropriate pictures of their damaged product if requested.

A defect in material or workmanship does not include damage to a product, or failure of a product to operate or perform properly or to maintain appearance, caused by (1) misuse or abuse of the product; (2) improper assembly or assembly that was not as recommended by the written assembly instructions; (3) normal wear and tear; (4) a natural disaster or an Act of God; (5) transportation; (6) an unau-

thorized modification made without the express written consent of X-Chair™; (7) improper storage; (8) the natural aging of materials such as wood, leather, and fabric which results in colors shifting during use; (9) crocking or reverse crocking of dyes from clothing on our seating materials. Products damaged in these ways will not be considered defective and will therefore not be repaired, replaced, or refunded.

We shall not have tort liability with respect to a product, and we shall not be liable for any consequential, economic, indirect, special, punitive, or incidental damages arising from a product defect.

Patents

We hold US Patents on both our sci-float infinite recline mechanism and our Dynamic Variable Lumbar Support split-back design.

Both patents will help to protect our wholesalers and allow them to flourish with a unique and powerful product, knowing they have market protection in place.

X-Chair is perfect for any size office.

No matter where you work, X-Chair has SPEQC!

SStyle for any office aesthetic

PPrice that won't break the bank

Ergonomics and technological innovations

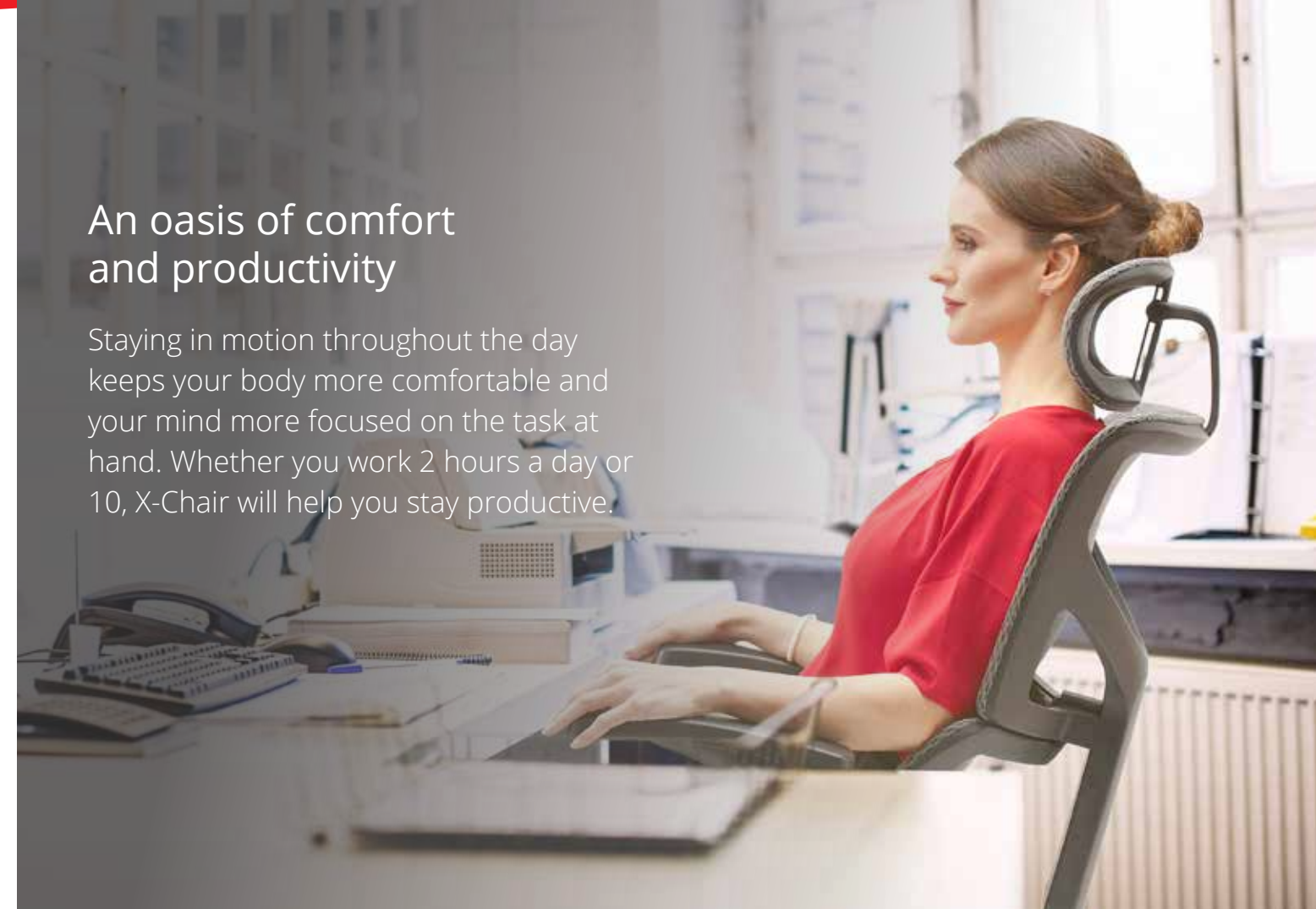
Quality materials and a 15-year warranty

Comfort you've been searching for



An oasis of comfort and productivity

Staying in motion throughout the day keeps your body more comfortable and your mind more focused on the task at hand. Whether you work 2 hours a day or 10, X-Chair will help you stay productive.



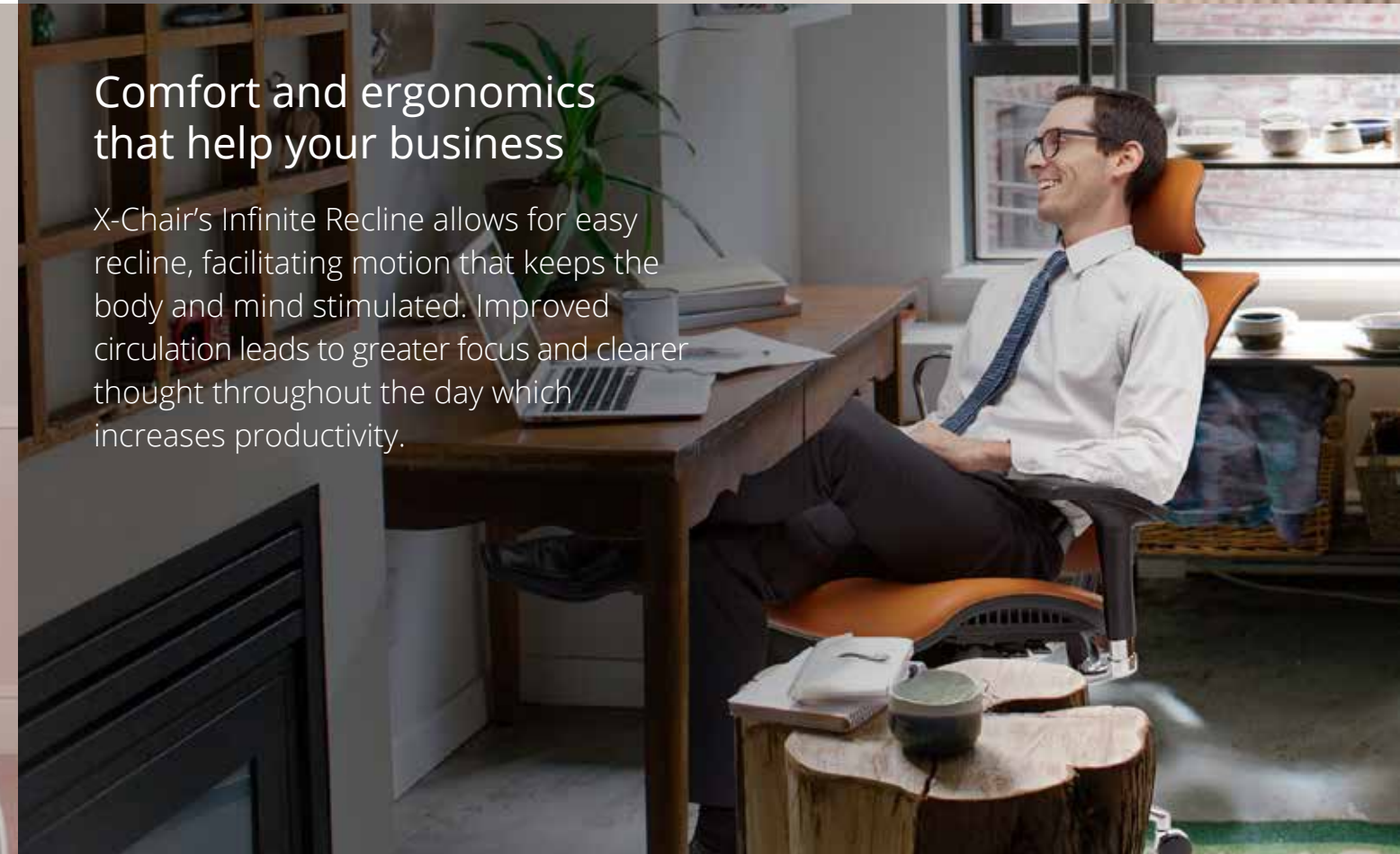
The perfect fit for you and your home office

10 ergonomic adjustments allow you to fit the X-Chair to your body. Multiple material and color options let you design the X-Chair to fit your office aesthetic.



Comfort and ergonomics that help your business

X-Chair's Infinite Recline allows for easy recline, facilitating motion that keeps the body and mind stimulated. Improved circulation leads to greater focus and clearer thought throughout the day which increases productivity.





As Seen In & Heard On

The New York Times



USA
TODAY
A GANNETT COMPANY



THE WALL STREET JOURNAL.

 **X-CHAIR**

www.xchair.com | 844-4-XCHAIR | sales@xchair.com